

# IKA

laboratory equipment  
designed for scientists

EN

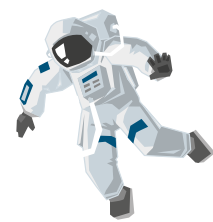
MASON  
TECHNOLOGY



*Jay is the  
most magnetic  
force in the  
universe.*

Our specials, 1st edition 2016.

ENJOY IT.



# SPECIALS

/// 1st edition 2016

### Feel like going on small voyages of discovery?

With our specials we offer you exceptional deals for your laboratory on a quarterly basis. For 2016, we came up with small themed worlds for each issue of our IKA Specials. We look forward to presenting you our product diversity with charming illustrations.

We are very pleased that we managed to win over an accomplished illustrator, who is picking a new theme each quarter to illustrate the creativity of our everyday work day.

The entire IKA-Team wishes you a lot of fun with the first issue of 2016: “Joy is the most magnetic force in the universe.” Enjoy it!

**3 YEAR WARRANTY\***

\* 2 years + 1 year after registration at [www.ika.com/register](http://www.ika.com/register), excludes wear parts



Discover and order the fascinating products of IKA online: [www.ika.com/ikaspecials](http://www.ika.com/ikaspecials).

4

/// MAGNETIC STIRRER

6

/// MULTIPOSITION STIRRER

8

/// OVERHEAD STIRRER

10

/// DISPERSER

12

/// ROTARY EVAPORATOR

15

/// DRY BLOCK HEATER

16

/// SHAKER

18

/// TEMPERATURE CONTROL

20

/// MILL

21

/// CENTRIFUGE

22

/// LABORATORY REACTOR

24

/// PILOT

25

/// SOFTWARE

26

/// IKA SERVICE

# RCT basic

/// Magnetic stirrer with heating

The bestseller in laboratories: Strong motor for a higher range of speeds, additional temperature control mode for faster heating of medium.



**Precise temperature control**

The set temperature is reached quickly and held stable.



**Adjustable safety circuit – conforms to standards**

The flashpoint of the medium will not be overshoot. Prevents accidental changes of the safety temperature.



**Self-monitoring of all safety relevant components**

Guarantees safety in the event of a malfunction.



**Digital display**

Enables comparison of set and actual temperatures as well as stirring speed. Monitoring of set values is also possible from a distance due to the easy-to-read display.



**Two independent control circuits**

The set temperature values are held constant in the event of a malfunction of one control circuit.



**TECHNICAL DATA**

/// RCT basic, Ident. No. 3810000\*

Max. stirring quantity (H <sub>2</sub> O)	20 l
Motor rating input / output	16 / 9 W
Speed range	50 – 1,500 rpm
Heat output	600 W
Temperature range	RT – 310 °C
Adjustable safety circuit	50 – 360 °C
Control accuracy with sensor	PT 1,000: ± 1 K ETS-D5: ± 0.5 K ETS-D6: ± 0.2 K
Heating plate material	aluminum alloy
Heating plate dimensions	Ø 135 mm
Dimensions (W x D x H)	160 x 270 x 85 mm
Weight	2.5 kg

\* PT 1000.60 included in delivery.



**RCT basic**

Ident. No 3810000\*

€ 697.00

€ 599.00



RT 5

Ident. No. 3690600  
**€ 2,046.00**



**Heating foil** for homogeneous temperature distribution on the heating plate.



**Reverse rotation** switch for better mixing results.



**Wear-free magnetic coils** for consistent and silent operation.

# RT stirrers

/// Multiposition stirrers with heating



RT 10

Ident. No. 3691100  
**€ 2,738.00**



RT 15

Ident. No. 3692600  
**€ 3,425.00**

**TECHNICAL DATA**  
/// Replaces RT 5/10/15 power

	RT 5 Ident. No. 3690600	RT 10 Ident. No. 3691100	RT 15 Ident. No. 3692600
Number of stirring positions	5	10	15
Max. stirring quantity (H <sub>2</sub> O)	0.4 l	0.4 l	0.4 l
Distance between stirring places	90 mm	90 mm	90 mm
Deviation for individual stirring positions	0 %	0 %	0 %
Speed display	LED	LED	LED
Speed range	0 – 1,000 rpm	0 – 1,000 rpm	0 – 1,000 rpm
Speed adjustment	10 rpm steps	10 rpm steps	10 rpm steps
Heat output	175 W	375 W	580 W
Temperature range heating plate	RT – 120 °C	RT – 120 °C	RT – 120 °C
Max. temperature medium (dep. on vessel)	70 °C	70 °C	70 °C
Set-up plate material	aluminum alloy	aluminum alloy	aluminum alloy
Set-up plate dimensions	110 × 495 mm	180 × 495 mm	270 × 495 mm
Dimensions (W × D × H)	120 × 610 × 60 mm	190 × 610 × 60 mm	280 × 610 × 60 mm
Weight	4 kg	7.5 kg	10.5 kg

# EUROSTAR digital packages

/// Overhead stirrers



**EUROSTAR 20 digital package**

- › EUROSTAR 20 digital
- + R 1826 stand
- + R 182 clamp
- + R 1342 propeller stirrer, 4-bladed

Ident. No. 9025100  
€ 1,246.00  
**€ 828.00**

**TECHNICAL DATA**  
/// EUROSTAR 20 digital, Ident. No. 4442000

Stirring quantity max. (H <sub>2</sub> O)	15 l
Max. viscosity	10,000 mPas
Motor rating input / output	70 / 42 W
Speed range	0/30 – 2,000 rpm
Max. torque at stirring shaft	20 Ncm
Temp. sensor connection	no
Chuck range	0.5 – 10 mm
Dimensions (W x D x H)	86 x 208 x 248 mm
Weight	4.4 kg
Permissible ambient temp.	5 – 40 °C
Permissible relative moisture	80 %
Protection class DIN EN 60529	IP 40



**EUROSTAR 40 digital package**

- › EUROSTAR 40 digital
- + R 1826 stand
- + R 182 clamp
- + R 1342 propeller stirrer, 4-bladed

Ident. No. 10000762  
~~€ 1,477.00~~  
**€ 1,059.00**

**TECHNICAL DATA**  
/// EUROSTAR 40 digital, Ident. No. 4444000

Stirring quantity max. (H <sub>2</sub> O)	25 l
Max. viscosity	30,000 mPas
Motor rating input / output	118 / 84 W
Speed range	0/30 – 2,000 rpm
Max. torque at stirring shaft	40 Ncm
Temp. sensor connection	no
Chuck range	0.5 – 10 mm
Dimensions (W x D x H)	86 x 208 x 248 mm
Weight	4.4 kg
Permissible ambient temp.	5 – 40 °C
Permissible relative moisture	80 %
Protection class DIN EN 60529	IP 40



**Rotating knob** for adjusting the speed and **pressing knob** for navigating through the menu on the wireless controller.



**Digital display** for precise monitoring of set and actual speeds.



**FREE**  
/// R 1826 stand + R 182 clamp + R 1342 propeller stirrer, 4-bladed





# T 25 digital package

/// High speed homogenizer



**T 25 digital package**  
› T 25 digital  
+ S 25 N-18 G dispersing shaft  
+ R 1826 stand  
+ RH 3 strap clamp  
+ R 182 clamp

Ident. No. 10001870  
~~€ 2,963.00~~  
**€ 2,138.00**

**+ FREE**  
/// S 25 N-18 G dispersing shaft + R 1826 stand +  
RH 3 strap clamp + R 182 clamp



**TECHNICAL DATA**  
/// T 25 digital, Ident. No. 3725000

Motor rating input / output	700 / 500 W
Volume range (H <sub>2</sub> O)	1 – 2,000 ml
Viscosity max.	5,000 mPas
Speed range	3,000 – 25,000 rpm
Speed display	LED
Speed control	stepless
Noise without element	75 dB(A)
Extension arm diameter	13 mm
Extension arm length	160 mm
Process type	batch
Dimensions (W × D × H)	87 × 106 × 271 mm
Weight	2.5 kg
Perm. ambient temperature	5 – 40 °C
Permissible relative moisture	80 %
Protect. class DIN EN 60529	IP 20
Interface	no
Voltage	100 – 120 V
Frequency	50 / 60 Hz



**reddot design award  
winner 2012**



Wide selection of  
**dispersing tools** to suit  
your application.



**Rotating knob** for adjusting  
the speed.



**Motor protection**  
against overload.



**Digital  
Display**

**Digital display** for  
precise monitoring of  
set and actual speeds.

# RV 8 complete solution

/// Rotary Evaporator

The youngest family member in the **IKA Rotary Evaporator** range – the RV 8. This distilling system completes the existing series by adding a functional basic model. The manual lift, with ambidextrous design allows for precise positioning of the glassware. Digital displays for rotation speed and heating bath temperature allow for an optimal control of all distilling processes. The clamp mechanism simplifies the changing of evaporation flasks.



- RV 8 complete solution**
- › RV 8 V
  - + MVP 10 basic vacuum pump
  - + VCV 1 vacuum control valve manual
  - + RC 2 basic chiller
  - + H.SI.8 tube
  - + 2 × RV10.8001 seal

Ident. No. 10001803  
€ 7,123.00-  
**€ 6,920.00**



Compatible with the complete range of IKA glassware.



Heating bath can be used as a stand-alone unit and comes with integrated ergonomic carrying handles.



Adjustable immersion angle and height.



**Can be moved by 120 mm** to accommodate different flasks.



## SPECIAL PRICE

/// MVP 10 basic vacuum pump + RC 2 basic chiller + H.SI.8 tube + 2 × RV10.8001 seal + VCV 1 vacuum control valve manual



## DRIVE

/// RV 8 V, Ident. No. 8033800

Motor type	brushless DC drive motor
Motor rating input	50 W
Speed range	5 – 300 rpm
Speed display	digital
Clockwise and counter-clockwise	no
Soft start	yes
Head angle adjustable	0 – 45°
Stroke displacement	120 mm, manual
Setting of lower end stop	no
Vacuum controller	optional



## GENERAL DATA

/// RV 8 V, Ident. No. 8033800

Dimensions (W × D × H)	510 × 345 × 490 mm
Weight of the drive incl. heating bath without glass parts	17.2 kg
Permissible ambient temperature	5 – 40 °C
Permissible relative moisture	80 %
Protection class according to DIN EN 60529	IP 20
Voltage / Frequency	110 – 120 V / 50 / 60 Hz

# RV 10 control auto

/// Rotary Evaporator

The enhanced **RV 10 control auto** is equipped with our fully automated speed control pump N 920. Additionally, the RV 10 control auto detects the required level of vacuum pressure by detecting the boiling point of the solvent. This feature has some significant benefits over a valve-regulated system.




**FREE**  
/// labworldsoft®

**RV 10 control auto**  
› RV 10 control  
+ labworldsoft® software  
+ RC 2 chiller




Ident. No. 10001506  
~~€ 11,107.00~~  
**€ 9,940.00**

 Compatible with the complete range of IKA RV 10 glassware.

 Two digital displays for an optimal overview.

 Adjustable immersion angle and height.

 **Can be moved by 140 mm** to accommodate different flasks.

## DRIVE

/// RV 10 control auto, Ident. No. 10001506

Motor type	brushless DC drive motor
Motor rating input	50 W
Speed range	20 – 280 rpm
Speed display	digital
Clockwise and counter-clockwise	yes
Soft start	yes
Head angle adjustable	0 – 45°
Stroke displacement	140 mm, motorized
Setting of lower end stop	60 mm, contact free
Vacuum controller	integrated

## GENERAL DATA

/// RV 10 control auto, Ident. No. 10001506

Dimensions (W x D x H)	530 x 410 x 430 mm
Weight of the drive incl. heating bath without glass parts	21.5 kg
Permissible ambient temperature	5 – 40 °C
Permissible relative moisture	80 %
Protection class according to DIN EN 60529	IP 20
Voltage / Frequency	110 – 120 V / 50 / 60 Hz

# Dry Block Heater 2 packages

/// Precision temperature stability for reproducibility



## TECHNICAL DATA

/// Dry Block Heater 2, Ident. No. 4025201

Number of blocks	2
Heat output	250 W
Heating temperature range	RT +5 °C – 120 °C
Display	LED
Heat control accuracy	± 1 K
Connection for external temperature sensor	DIN 12878
Control accuracy with sensor	± 1 K
Material of the blocks	aluminum alloy
Timer	1 min – 99 h 59 min
Dimensions (W x D x H)	151 x 304 x 73 mm

**BUY A DBH 2 AND GET 1 FREE INSERT**

**DB 1.3 package**  
› DBH 2  
+ Insert DB 1.3

Ident. No. 10001296  
~~€ 1,052.00~~  
**€ 980.00**

**FREE**  
/// Insert DB 1.3



**DB 6.3 package**  
› DBH 2  
+ Insert DB 6.3

Ident. No. 10001299  
~~€ 1,080.00~~  
**€ 980.00**

**FREE**  
/// Insert DB 6.3





Vortex 2 bundle

/// Shaker



Ident. No. 10001804  
~~€ 995.00~~  
**€ 796.00**

5 FOR THE  
PRICE OF 4



**TECHNICAL DATA**  
/// Vortex 2, Ident. No. 25000258

Type of movement	orbital
Shaking diameter	4 mm
Permissible shaking weight (incl. attachment)	0.4 kg
Motor rating input / output	42 / 11 W
Speed range	500 – 2,500 rpm
Speed display	scale (0 – 6)
Timer display	none
Operating mode	continuous operation / touch operation
Dimensions (W × D × H)	120 × 138 × 140 mm
Weight	3.9 kg
Permissible ambient temp.	5 – 40 °C
Permissible relative moisture	80 %

lab dancer special

/// Shaker



Ident. No. 10001794  
~~€ 468.00~~  
**€ 351.00**

BUY 1  
AND GET 2ND  
50 % OFF



**TECHNICAL DATA**  
/// lab dancer, Ident. No. 3365000

Type of movement	orbital
Shaking diameter	4.5 mm
Permissible shaking weight (incl. attachment)	max. 50 ml (1 test tube)
Motor rating input / output	1.2 / 0.8 W
Speed range	2,800 rpm (fixed)
Speed display	none
Timer display	none
Operating mode	touch operation
Dimensions (Ø × H)	100 × 70 mm
Weight	0.55 kg
Permissible ambient temperature	5 – 40 °C
Permissible relative moisture	80 %

KS 3000 i control package

/// Incubator Shaker



**KS 3000 i control package**  
› KS 3000 i control  
+ AS 260.2 fixing clip attachment

Ident. No. 10001805  
~~€ 4,635.00~~  
**€ 4,519.00**



**FREE**  
/// AS 260.2 fixing clip attachment



**USB interface** to control and document all parameters using labworldsoft® software, and for updating your firmware.



**TECHNICAL DATA**  
/// KS 3000 i control, Ident. No. 3940000

Type of movement	orbital
Shaking diameter	20 mm
Permissible shaking weight (incl. attachment)	7.5 kg
Motor rating input / output	45 / 10 W
Heating temperature range	RT + 5 °C – 80 °C
Permissible ON time	100 %
Speed range	10 – 500 rpm
Speed display	LED
Timer	1 s – 999 h
Timer display	LED
Operating mode	timer and continuous operation
Dimensions (W × D × H)	465 × 430 × 695 mm
Weight	35 kg
Permissible ambient temperature	15 – 32 °C
Permissible relative moisture	80 %



**ACCESSOIRES** (please purchase separately)  
/// Fixing clips 25 – 1,000 ml



/// AS 2.1,  
Ident. No. 1234300



/// AS 2.2,  
Ident. No. 1234400



/// AS 2.3,  
Ident. No. 1234500



/// AS 2.4,  
Ident. No. 1234600



/// AS 2.5,  
Ident. No. 1234700



/// AS 2.6,  
Ident. No. 3819300



Wide range of attachments allows using almost all shapes and sizes of vessels.

# HBC 5/10 feature

## /// Temperature control

The **HBC temperature control products** from IKA are based on a modular design concept. The base of both devices is the IC head. The IC head is combined with a well-insulated bath to create the HBC (heating bath circulator). Both devices are designed for external tempering of complex applications.



Integrated pressure / suction pump allows flexibility for internal and external applications.



Removable **wireless controller (WiCo)** for easy and safe operation up to 10 m.



Optical and acoustic warning function e.g. for over heating.



### TECHNICAL DATA

/// HBC 5/10 basic/control

	HBC 5 basic   control Ident. No. 4125000 Ident. No. 4127000	HBC 10 basic   control Ident. No. 4135000 Ident. No. 4137000
Appliance type	Heating bath circulator	Heating bath circulator
Safety class	III (FL)	III (FL)
Heater capacity (230 / 115 V)	2,500 / 1,250 W	2,500 / 1,250 W
Temperature range	RT +10 °C – 200 °C   RT +10 °C – 250 °C (with integrated cooling coil*)	RT +10 °C – 200 °C   RT +10 °C – 250 °C (with integrated cooling coil*)
Temperature display	LED   TFT	LED   TFT
Temperature stability DIN 12876	± 0.02 K   ± 0.01 K	± 0.02 K   ± 0.01 K
Bath volume range	5 – 7 l	8 – 11 l
Max. flow rate (at 0 bar)	26 l/min   31 l/min	26 l/min   31 l/min
Max. pump pressure	0.45 bar   0.61 bar	0.45 bar   0.61 bar
Min. suction pressure	0.35 bar   0.45 bar	0.35 bar   0.45 bar
Dimensions (W x D x H)	275 x 500 x 405 mm	275 x 510 x 455 mm
Permissible ambient temperature	5 – 40 °C	5 – 40 °C
Permissible relative moisture	80 %	80 %
Protection class acc. to DIN EN 60529	IP 21	IP 21
USB / RS 232 interface	yes	yes

\* Lower working temperatures possible with connection to a chiller



HBC 5 basic

Ident. No. 4125000

€ 2,660.00



HBC 5 control

Ident. No. 4127000

€ 3,160.00



HBC 10 basic

Ident. No. 4135000

€ 2,820.00



HBC 10 control

Ident. No. 4137000

€ 3,400.00



Integrated handles for easy carrying.



Precise temperature stability ± 0.01 K.

# A 11 basic package

/// Mill



A 11 basic mill package  
› A 11 basic mill  
+ A 11.5 spare grinding chamber

Ident. No. 10001509  
~~€ 2,142.00~~  
**€ 1,805.00**



TECHNICAL DATA

/// A 11 basic, Ident. No. 2900000

Motor rating input/output	160 / 100 W
Speed range	28,000 rpm (fixed)
Useful volume	80 ml (optional 250 ml)
Duty cycle (ON / OFF)	1 / 10 min
Overload protection	yes
Circumferential speed	53 m/s
Max. feed hardness	9 Mohs
Max. feed grain size	10 mm
Grinding chamber material	stainless steel (AISI 316L)
Dimensions (W × D × H)	85 × 85 × 240 mm
Weight	1.5 kg
Permissible ambient temperature	5 – 40 °C
Permissible relative moisture	80 %
Protection class according to DIN EN 60529	IP 43



FREE

/// A 11.5 spare grinding chamber



Quiet operation.



Easily exchangeable beater / cutter.

# IKA mini G bundle / special

/// Centrifuge



IKA mini G bundle

Ident. No. 10001801  
~~€ 1,140.00~~  
**€ 855.00**

BUY 3 GET  
1 FOR FREE

IKA mini G special

Ident. No. 10001802  
~~€ 570.00~~  
**€ 527.00**

BUY 1  
GET 15% OFF  
2ND UNIT



INCLUDED ACCESSORIES

/// Rotor + adapter set



Quiet operation.



Touch keypad for easy operation.



Adjustable digital timer.



Integrated quick stop.



Rotor exchangeable without tools.



Special safety features.



TECHNICAL DATA


/// IKA mini G, Ident. No. 3958000

Capacity	8 × 2.0 ml	Fixed speed	6,000 rpm
Permitted density	1.2 kg / dm³	Reversible direction of rotation	no
Centrifugal acceleration	2,000 G	Dimensions (W × D × H)	155 × 175 × 105 mm
Max. kinetic energy	20 Nm	Weight	1.4 kg
Motor rating input / output	12 / 8 W		

# LR 1000 basic/control complete package

/// Laboratory Reactors



-  Possibility to connect **pH electrode**.
-  Our LR 1000 control has an **integrated weighing function**.
-  **USB interface** to control and document all parameters using labworldsoft® software, and for updating your firmware.
-  **Large, easy-to-read TFT display** for better image quality and easy navigation.
-  **Torque trend measurement** indicates changes in viscosity of the product.

## TECHNICAL DATA

/// LR 1000 basic | Ident. No. 8040100 + LR 1000 control | Ident. No.10001035

Usable volume	300 – 1,000 ml		
Max. working temperature	120 °C	Heat output	1,000 W
Nominal torque	3 Nm	Heat control accuracy	± 1 K
Attainable vacuum	25 mbar	Dimensions (W x D x H)	443 x 295 x 360 mm
Max. viscosity	100,000 mPas	Weight	16 kg
Speed range	10 – 150 rpm	Permissible ambient temperature	5 – 40 °C
Display	LED   TFT	Permissible relative moisture	80 %



**LR 1000 basic** complete package  
› LR 1000 basic  
+ LR 1000.70 lid holder

Ident. No. 10001807  
~~€ 4,939.00~~  
**€ 4,761.00**

**+ FREE**  
/// LR 1000.70 lid holder



**LR 1000 control** complete package  
› LR 1000 control  
+ RC 2 basic  
+ labworldsoft® software  
+ 2 x H.PUR.8.R hose  
+ LR 1000.70 lid holder

Ident. No. 10001806  
~~€ 12,317.00~~  
**€ 10,924.00**

**+ FREE**  
/// RC 2 basic + labworldsoft® +  
2 x H.PUR.8.R hose + LR 1000.70 lid holder



THE LR 1000 CONTROL  
HAS A **PATENTED**  
INTEGRATED WEIGHING FUNCTION



**magic PLANT** basic/inline/powder

/// Laboratory scale process plant



**magic PLANT** basic

**magic PLANT** inline

**magic PLANT** powder

Ident. No. 20001186  
**€ 19,400.00**

Ident. No. U107703  
**€ 27,600.00**

Ident. No. U107159  
**€ 19,900.00**



Tiltable vessel.



Modular design.



Higher viscosity products processible  
(100.000 mPas).

**TECHNICAL DATA**  
/// magic PLANT basic/inline/powder

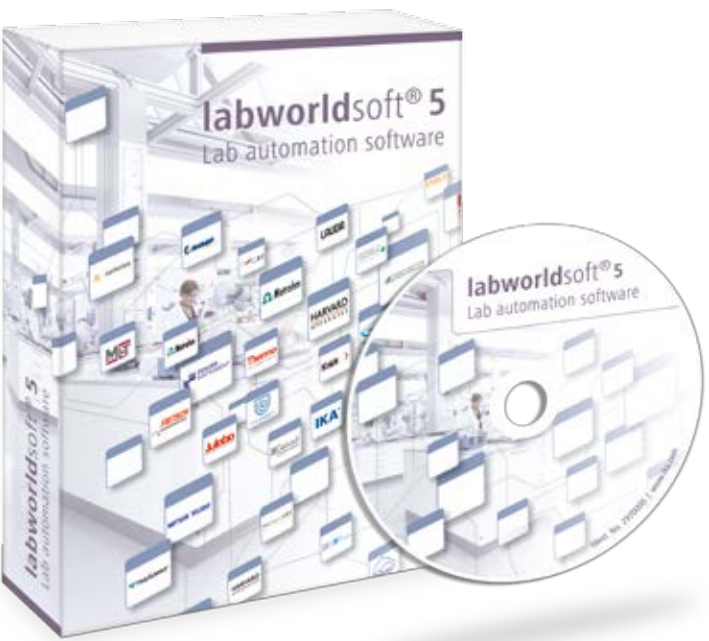
	magic PLANT basic Ident. No. 20001186	magic PLANT inline Ident. No. U107703	magic PLANT powder Ident. No. U107159
Max. admissible temperature	150 °C	150 °C	150 °C
Working pressure range	-1 up to 2.5 bar	-1 up to 2.5 bar	-1 up to 2.5 bar
Useful volume	2 l	2 l	2 l
Stirring tool	anchor or propeller	propeller	spiral agitator
Speed range	0 – 350 rpm 0 – 2,000 rpm	0 – 350 rpm 0 – 2,000 rpm	0 – 350 rpm

**labworldsoft®**

/// Advanced software with an innovative visual approach to lab automation

IKA's software labworldsoft® enables the networking of up to 64 laboratory devices which can be controlled simultaneously via one PC. Not only IKA products, but also other manufacturers laboratory devices can be integrated using labworldsoft®.

It can network up to 64 devices simultaneously via one PC, thus making the automation of your laboratory experiments and processes much more easy and efficient. It not only integrates IKA laboratory devices but also supports devices from other manufacturers.



**labworldsoft®**

Ident. No. 4720000  
**€ 1.167,00**

**TRY IT FOR YOURSELF**  
Get your free, fully functional 30 day trial version download at: [www.ika.com](http://www.ika.com)

**HARDWARE AND SOFTWARE REQUIREMENTS**  
/// labworldsoft®, Ident. No. 4720000

Pentium processor with at least 16 MB RAM, 8 MB free hard disc memory, VGA-Display: monochrome with at least 16 levels of gray or color, Windows 95/98/2000/NT/ME/XP/7 and com ports can be upgraded for certain requirements.

## Customizing Center

/// [www.ika.com/customizingcenter](http://www.ika.com/customizingcenter)

It is important that IKA products work for your application. We have a special program: product solutions tailored to your needs. Should you not find the appropriate device in our standard product range, please send us your requested specifications through the online form. Our team will determine its feasibility and offer a solution to you.

Please visit [www.ika.com/customizingcenter](http://www.ika.com/customizingcenter) to review already implemented product modifications.



## IKA Application Support

/// [www.ika.com/applicationsupport](http://www.ika.com/applicationsupport)

Our Application Center in Germany spans 400 sqm and offers modern facilities for presenting and testing lab devices and processes. This brings us even closer to our customers and improves our service. Here, prospective buyers and customers can test processes that involve stirring, shaking, dispersing, grinding, heating, analyzing and distilling.

Call us at **00 8000 4522777** (00 8000 IKAAPPS) or send an email to [applicationsupport@ika.de](mailto:applicationsupport@ika.de) or visit our website at [www.ika.com/applicationsupport](http://www.ika.com/applicationsupport).



Our Application Center in Germany spans **400 sqm** and offers modern facilities for presenting and testing lab devices and processes.



**Send us your sample.**  
We will test it for you with a device suitable for your application - within 48 hours!



We are pleased to help you find the **perfect device** to serve your application requirements.



Buyers and customers **can test processes** that involve stirring, shaking, dispersing, grinding, heating, analyzing and distilling.



laboratory equipment  
designed for scientists

EN

---

**IKA-Werke GmbH & Co. KG**

Janke & Kunkel-Straße 10, 79219 Staufen, Germany

Phone: +49 7633 831-0, Fax: +49 7633 831-98

eMail: [sales@ika.de](mailto:sales@ika.de)

---

**MASON**  
TECHNOLOGY



**DUBLIN**

Mason Technology Ltd.

228 South Circular Road, Dublin 8 Ireland

Phone: +353 1 453 4422

Web: [www.masontechnology.ie](http://www.masontechnology.ie)

---

**/// ONLINESHOP**

Discover and order the fascinating products of IKA online:

**[www.ika.com/ikaspecials](http://www.ika.com/ikaspecials).**

---

**/// SOCIAL MEDIA**



IKAworldwide



IKAworldwide /// #lookattheblue



@IKAworldwide

---

Subject to technical changes and alteration of prices.  
Prices valid January 1st through March 31, 2016.  
Offers exclude taxes and other sales related fees.